



Products of our professional CCTV system solutions



Digital CCD camera

FAC 858I

FAC 858WP

FA 857 I

FA 857 WP

unique features

- real time night vision mode (ALL)
- triple day/night mode with patented wear-free plettac universal filter (colour, b/w, IR)
- advanced video detection
- cross wire masking
- integrated video memory for increased photosensitivity, max. 15 additional images, sequential pre-trigger recording
- comparison between stored and live image
- electronic back focus adjustment with 2 memory positions
- wide range of supply voltage
- galvanic isolation between power supply, video GND and casing
- line mirror and image rotation
- 3 user memories for customized configurations plus 1 internal storage for factory setting
- electronic anti-theft protection

outstanding image quality, automatic image optimization

- automatic image setting (lens control/SCS/AGC/LSS/ALL)
- automatic contrast for improved image evaluation
- peak light blanking
- automatic white balance
- automatic black level control
- advanced IR sensitivity (FAC858-IR, FA857-IR)
- automatic sharpness (aperture)

compatibility and interfaces

- fully compatible with previous plettac systems
- lens connection for all iris types (ai, automatic, kangaroo-iris, DC-iris and ER-iris)
- 2 hardware control in-/outputs for different applications
- combination with external sensors (intrusion, fire and motion sensors)

easy setup and service

- electronically switchable termination resistors
- static masking of image areas
- text / time insertion
- power-on time monitoring with temperature profile
- external synchronisation with Genlock signal, line lock or restart
- remote control interface (RS 485) for configuration and operation including Back Focus adjustment
- EMC safety



1/2" CCD sensor

Indoor FAC 858 I (colour)
FA 857 I (black/white))



1/2" CCD sensor

Outdoor FAC 858 WP (weatherproof, colour)
FA 857 WP (weatherproof, black/white)

Description

The new plettac Security CCD camera is a further development of the 848 series. It opens new horizons for digital high performance cameras.

The plettac developed processor chip offers a wide range of new serialized benefits like automatic image enhancement, digital video memory, text flash & video detection

The new low light system called real time night vision mode (ALL)

With remote controlled back focus & software configuration, multiple memories, upgrades, new features can be controlled directly from the control room.

With optional High security versions & on screen ticker available this opens new markets for the 858 series of cameras.

Sensitivity down to 0.0025lux for the FA857 & 0.005lux for the FAC858 this offers true low level light performance.

investment safety
products and solutions made in germany



Standard features



Original image

Real time night vision mode (ALL)

The real time night vision mode (automatic low light) allows higher sensitivity in real time without motion blur. This mode excels for surveillance of areas with low lighting. The all-time sensitivity combined with low-speed shutter and ALL helps to save costs for light and energy.



Image with ALL



Image without masking

Static masking of image areas

Up to 6 areas per image can be black masked.



Masked image



Image with masked cross wire

Cross wire masking

Cross wire masking is available in black or white, it can be adjusted horizontally and vertically throughout the entire picture.

Text insertion

Individual text insertion in 2 lines with 20 characters per image.



Image with text insertion



Scene without automatic image valuation

Automatic contrast

Valuation features: automatic white balance, SCS automatic, automatic black level control and static image valuation window. These features allow optimum image replication any time.

Integrated clock

The integrated clock allows control of all features independent from time, date or third-party systems. Freewheeling or external synchronization with minute pulse.



Scene with automatic image valuation



Without peak light blanking

Peak light blanking

Heavy overdrive (e.g. in case of reflections) blanks out the related area and opens the iris (or SCS) a little more.



With peak light blanking



Original image

Automatic black level control

Black-level optimization for improvement of low-contrast images.



Image with adjusted black level



Original image

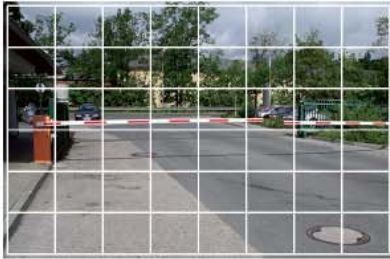
Line mirror / image rotation

This option allows horizontal image rotation to achieve mirror effects (e.g. rearview mirror effect for train platforms). These images are stored in the alarm memory.

For Upside Down installations the sensor can be rotated.



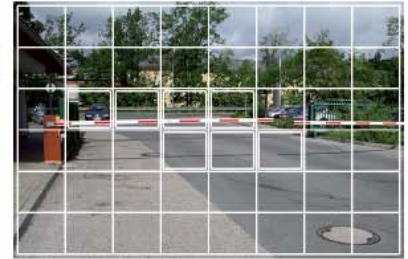
Mirrored image



Feasible alarm field positions

Enhanced automatic image valuation

Image valuation is made up of 48 independent alarm fields for user-defined setup. Control inputs allow alarm link to external sensors.



Selected alarm fields

Processor controlled low speed shutter / image memory

Extended exposure at the low speed shutter allows outstanding image replay even under bad lighting conditions. Use and adjustment range to be configured on demand.

Image memory

The image memory can store up to 15 independent alarm images

User memory

The camera provides one internal storage for factory setting and 3 user memory modules for parameter storage. Manual activation via control inputs or remote timer activation.

Comparison between memory and live image

Highlighting of deviations from live image to selectable stored image.

Processor controlled back focus adjustment

Remote controlled back focus adjustment via RS 485. Two different positions are pre-stored in the standard storage module. No need of infrared corrected lenses. Modifications without interface also via magnetic contacts.

Security Mode (passive anti-theft protection)

Each switch-on is automatically followed by a double safety check-up. If the necessary code can not be identified, the camera remains locked.

Automatic aperture

Including aperture cutoff in case of bad lighting conditions

Remote configuration via RS 485 interface

This interface allows non-restrictive communication with the camera: Remote configuration of software related system modifications, upgrades and new features – with direct feedback to the control station.

External synchronization

Line lock or Genlock, Restart

Video outputs

All cameras supply C(VBS) signal, symmetric signal, Y/C signal (colour type only) and BA signal for lens control.

Freely configurable control in- and outputs

The cameras can be linked with external sensors (e.g. burglar or fire alarm sensors) for visual documentation of any occurrence. Two control lines at the connecting plug can be defined as connectable in- or outputs.

Technical data	FAC 858 I colour indoor FAC 858 WP colour outdoor	FA 857 I b/w indoor FA 857 WP b/w outdoor
Sensor	1/2" interline, hyper-HAD	
Pixel total	470.000 = 795 (H) x 596 (V)	
Pixel effective	440.000 = 752 (H) x 582 (V)	
Line resolution	625 lines, 50 Hz	
Sampling rate	CCIR with line interface	
Horizontal resolution	480 lines	580 lines
Spectral range	400 nm ... 650 nm	400 ... 1000 nm
Camera photosensitivity LSS, ALL off	100 % level: 0,3 lx	100 % level: 0,15 lx
	50 % level: 0,15 lx	50 % level: 0,08 lx
	25 % level: 0,08 lx	25 % level: 0,04 lx
Camera photosensitivity LSS: 4 HB, ALL: 2 (standard setting)	100 % level: 0,018 lx	100 % level: 0,009 lx
	50 % level: 0,009 lx	50 % level: 0,005 lx
	25 % level: 0,005 lx	25 % level: 0,0025 lx
Shutter	1/1.000.000 - 10 s	
Max. scene lighting	100.000 lx during shutter operation	
Electrical data		
Video output	(C)VBS, coax, 2-wire 1 Vpp/75 Ω	
	sym. + (C)VBS 1 Vpp/75 Ω	
	sym. - (C)VBS 1 Vpp/75 Ω	
	Y/C(only FAC 858) 1 Vpp/75 Ω	
Supply voltage	11 ... 32 V DC, 24 V AC ± 10 %, galvanic isolation between supply voltage and ground	
Power consumption	858/857 I: 5 W	
	858/857 WP: 13 W with heater	
Mechanical data		
Output video	I=BNC, D-Sub, system plug	
	WP=system plug	
Remote control interface	system plug	
Lens connector	C-/CS mount, integrated 4-pole lens plug for the iris	
Protection class	I=IP32, WP=IP 66	
Storage temperature	-40 °C ... +70 °C	
Operating temperature	-25 °C ... +55 °C	
Weight (kg)	I: 0.6; WP: 2.4	
Weight including packing (kg)	I: 1.1; WP: 3.5	
Dimensions (mm)	I: 185.5 x 71.5 x 60 (L x W x H); WP: 300 x 126 x 83 (L x W x H)	
Packing dimensions (mm)	I: 308 x 158 x 116 (L x W x H); WP: 426 x 329 x 228 (L x W x H)	
Item code	Description	Order number
FAC 858I	Indoor colour camera	943042120100
FAC 858I-IR	IR indoor colour camera	943042120400
FA 857 I	Indoor b/w camera	943042110100
FA 857 I-IR	IR indoor b/w camera	943042110400
FAC 858 WP	Outdoor colour camera	943042140100
FAC 858 WP-IR	IR outdoor colour camera	943042140400
FAC 858 I-S	Indoor colour camera, security	943042120200
FAC 858 I-HS	Indoor colour camera, high security	943042120300

Subject to change without notice
Technical status 03/2007
FAC858_FA857/GB/001/03/2007